

## Neolithic and earlier Bronze Age

### Bibliography of Neolithic and earlier Bronze Age research in Wales (2004 – 2009)

1 June 2010

Compiled by Steve Burrow PhD AMA MIFA FSA

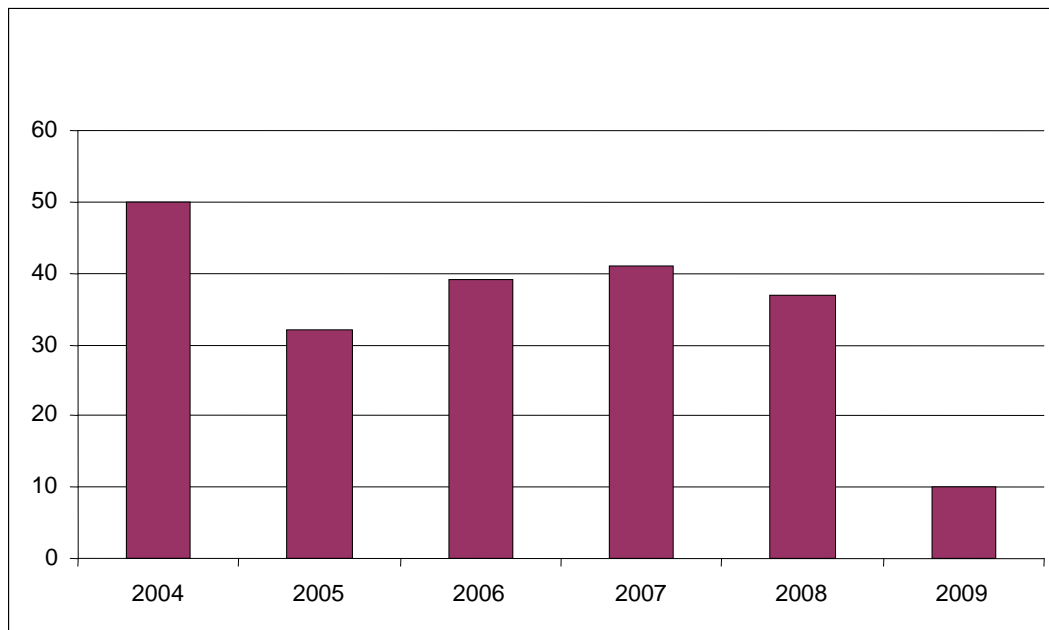
#### ***Introduction***

This bibliography has been produced through a trawl of major journals with additional entries being supplied by researchers participating in the review of the Neolithic and Early Bronze Age research agenda.

There are currently few entries for 2009 as *Archaeology in Wales* (a major source) has not yet been published for this year.

Entries have been provisionally classified according to the major themes of the research agenda, although inevitably this classification provides only a rough approximation of the publication's contents. Inevitably some entries will require re-classification in the light of comment from colleagues with more experience in specific areas.

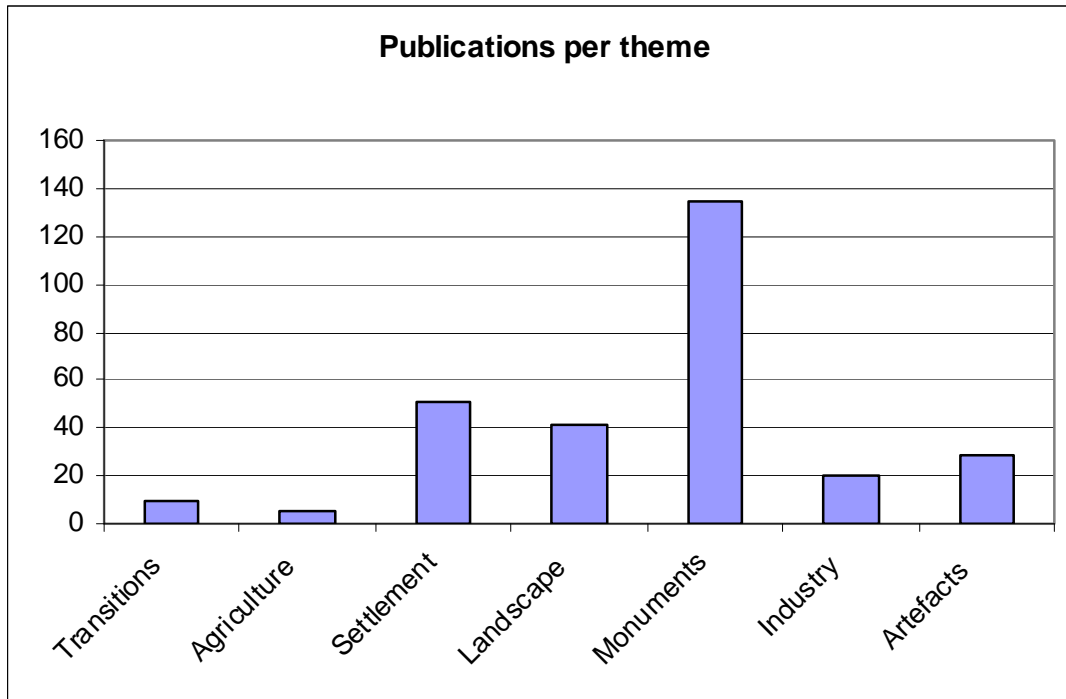
a. Relevant publications per year.



*This document's copyright is held by contributors and sponsors of the Research Framework for the Archaeology of Wales.*

## Neolithic and earlier Bronze Age

b. Relevant publications per theme.



## Neolithic and earlier Bronze Age

### Bibliography

	Transitions	Agriculture	Settlement	Landscape	Monuments	Industry	Artefacts
Aldhouse-Green, S. and Peterson, R. 2005. Goldsland Wood, Wenvoe (ST 11 72). <i>Archaeology in Wales</i> 45, 152-4.	Y				Y		
Aldhouse-Green, S. and Peterson, R. 2007. The Goldsland Caves research project: excavations in 2007. <i>Archaeology in Wales</i> 47, 68-71.	Y				Y		
Allen, J. R. L. 2005. Teleconnections and their archaeological implications, Severn Estuary Levels and the wider region: the 'fourth' and other mid-Holocene peats. <i>Archaeology in the Severn Estuary</i> 16, 17-65.				Y			
Barber, A. and Pannett, A. 2006. Archaeological excavations along the Milford Haven to Aberdulais natural gas pipeline 2006: a preliminary report. <i>Archaeology in the Wales</i> 46, 87-99.			Y	Y	Y		
Barker, L. 2007. Mynydd Rhiw axe factory, Botwnnog, Llyn peninsula (SH 2339 2991). <i>Archaeology in Wales</i> 47, 103.						Y	
Bassett, D., Davies, B., Jones-Jenkins, C. and Lowe, J. 2005. Coity, Coedparcgarw burial chamber, Byeastwood (SS 9269 8193). <i>Archaeology in Wales</i> 45, 143-4.					Y		
Bell, M. 2007. <i>Prehistoric coastal communities: the Mesolithic in western Britain</i> . York: Council for British Archaeology.	Y			Y	Y		
Bell, M. and Brown, A. 2007. Prehistoric activity in Peterstone Great Wharf palaeochannels: interim report on field survey and excavation 2007-8. <i>Archaeology in the Severn Estuary</i> 18, 85-101.			Y				
Bell, M. and Brown, A. D. 2005. Prehistoric activity in Peterstone Great Wharf palaeochannels: field survey 2005-6. <i>Archaeology in the Severn Estuary</i> 16, 85-97.			Y	Y			
Berks, T., Davidson, A., Kenney, J., Roberts, J. A. and Smith, G. 2007. A497 improvement: prehistoric sites in the vicinity of Abererch and Chwilog. <i>Archaeology in Wales</i> 47, 3-17.			Y		Y		

## Neolithic and earlier Bronze Age

	Transitions	Agriculture	Settlement	Landscape	Monuments	Industry	Artefacts
Brett, M. 2006. Trowbridge. land between Crickhowell Road and Willowbrook Drive, (ST 2354 8036). <i>Archaeology in Wales</i> 46, 182.			Y				
Briggs, C. S. 2005. Peat charcoal and archaeological dating in post-medieval Wales. <i>Archaeology in Wales</i> 45, 85-90.						Y	
Briggs, C.S. 2007. 'Burnt evidence and Mined ground: peat and poverty in early mineral extraction practice', in C.Burgess, P.Topping, and F.M. Lynch, (eds), <i>Beyond Stonehenge: Essays on the Bronze Age in Honour of Colin Burgess</i> , Oxford: Oxbow, 78-89.						Y	
Briggs, C.S. 2008. 'A monumental contribution? Sir John Gardner Wilkinson's neglected surveys of 'British' sites in perspective,' in P. Rainbird, (ed), <i>Monuments in the Landscape</i> , Oxford: Oxbow, 239-248.				Y	Y		
Briggs, C.S. 2008. 'An Egyptologist abroad: Sir John Gardner Wilkinson and some <i>British</i> monuments in Gower', <i>Gower</i> 59, 13-29.				Y	Y		
Briggs, C.S. 2009. 'Are Erratics and re-cycled stone scholarly irrelevancies or fundamental utilities to lithic studies in Prehistoric Britain and beyond?' <i>Internet Archaeology</i> 26 (Sept 2009).						Y	
Britnell, W. J., Caseldine, A. E. and Griffiths, C. J. 2008. Partial excavation of a round barrow on Corndon Hill in 2006. <i>Archaeology in Wales</i> 48, 17-25.					Y		
Brittain, M. 2004. Layers of life and death: aspects of monumentality in the early Bronze Age of Wales. In V. Cummings and C. Fowler (eds), <i>The Neolithic of the Irish Sea: materiality and traditions of practice</i> , 224-32. Oxford: Oxbow Books.					Y		
Brooks, I. and Laws, K. 2007. The Begwns, Paincastle (centred on SO 1397 4420). <i>Archaeology in Wales</i> 47, 110.					Y		
Brooks, I. and Laws, K. 2008. Brecon Beacons (centred on SO 0131 1698). <i>Archaeology in Wales</i> 48, 110.					Y		

## Neolithic and earlier Bronze Age

	Transitions	Agriculture	Settlement	Landscape	Monuments	Industry	Artefacts
Brooks, I. P. and Laws, K. 2005. Dyffryn Mymbyr, Capel Curig / Llanberis (SH 696 573). <i>Archaeology in Wales</i> 45, 137-8.				Y	Y		
Burrow, S. 2006. <i>The tomb builders in Wales 4000 - 3000 BC</i> . Cardiff: Amgueddfa Cymru - National Museum Wales.					Y		
Burrow, S. and Jackson, H. 2005. Mynydd Rhiw (SH 2328 2945). <i>Archaeology in Wales</i> 45, 148.						Y	
Burrow, S. and Williams, S. 2008. Making a date with Wales. <i>British Archaeology</i> 99, 39.	Y	Y	Y	Y	Y	Y	Y
Caseldine, A. E. and Earwood, C. 2004. A Neolithic wetland site at Abercynafon, Talybont, south Wales. <i>Journal of Wetland Archaeology</i> 4, 1-53.		Y					
Clarke, S. and Bray, J. 2006. Wilcrick, Church Farm (ST 40912 88136). <i>Archaeology in Wales</i> 46, 184.			Y				Y
Clarke, S., Bray, J. and Clarke, R. 2004. Langstone, Cats Ash Farm (ST 3702 9078). <i>Archaeology in Wales</i> 44, 152.							Y
Clarke, S., Bray, J., Harris, C. and Taylor, F. 2007. Chepstow, Newhouse Park (ST 5310 9149 / 5299 8985). <i>Archaeology in Wales</i> 47, 130-2.			Y				
Cook, N. 2006. Prehistoric funerary and ritual sites in Pembrokeshire. <i>Journal of the Pembrokeshire Historical Society</i> 15, 5-36.				Y	Y		
Cook, N. 2008. Prehistoric funerary and ritual sites in Ceredigion. <i>Ceredigion</i> 15:4, 1-34.				Y	Y		
Crane, P. 2004. Excavations at Newton, Llandstadwell, Pembrokeshire. <i>Archaeology in Wales</i> 44, 3-32.			Y				
Crane, P. 2005. Herbraston, South Hook Liquid Natural Gas Terminal (SM 8720 0674). <i>Archaeology in Wales</i> 45, 151.			Y	Y			
Crane, P. 2008. Felindre Varchog, A487 (SN 0905 3896 - SN 0950 3874). <i>Archaeology in Wales</i> 48, 119.			Y		Y		
Crane, P. 2008. Tal y Bont, Moel y Llyn, Carregcadwgan Farm (SN 70100 91160). <i>Archaeology in Wales</i> 48, 113.					Y		
Crossland, Z., Freeman, M., Jones, P. and Boyd, B.					Y		Y

## Neolithic and earlier Bronze Age

	Transitions	Agriculture	Settlement	Landscape	Monuments	Industry	Artefacts
2008. The Llanbadarn Fawr 'Gravestone urn': an object history. In P. Rainbird (ed), <i>Monuments in the landscape:</i> , 212-27. Stroud: Tempus.							
Cummings, V. 2004. Connecting the mountains and sea: the monuments of the eastern Irish zone. In V. Cummings and C. Fowler (eds), <i>The Neolithic of the Irish Sea: materiality and traditions of practice</i> , 29-36. Oxford: Oxbow Books.				Y	Y		
Cummings, V. 2009. <i>A view from the west: the Neolithic of the Irish Sea zone</i> . Oxford: Oxbow.				Y	Y		
Cummings, V. 2009. Monuments at the centre of the world: exploring regional diversity in south-west Wales and south-west Scotland. In K. Brophy and G. Barclay (eds), <i>Regional diversity in the Neolithic of Britain and Ireland</i> . Oxford: Oxbow.				Y	Y		
Cummings, V. and Fowler, C. (eds) 2004. <i>The Neolithic of the Irish Sea: materiality and traditions of practice</i> . Oxford: Oxbow.	Y			Y	Y		Y
Cummings, V. and Whittle, A. 2004. <i>Places of special virtue: megaliths in the Neolithic landscapes of Wales</i> . Oxford: Oxbow.				Y	Y		
Cummings, V. and Whittle, A. 2005. Pentre Ifan: east or west? The origins of monumentality in Wales and western Britain. In G. Marchand and A. Tresset (eds), <i>Unité et diversité des processus de néolithisation sur la façade atlantique de l'Europe (7ème-4ème millénaires avant J.-C.)</i> . Société Préhistorique Française: Bulletin de la Société Préhistorique Française.	Y				Y		
Darvill, T. and Wainwright, G. 2005. Beyond Stonehenge: Carn Menyn and the bluestones. <i>British Archaeology</i> 83, 28-31.					Y		
Darvill, T. and Wainwright, G. 2008. Beyond Stonehenge: Carn Meini and the Preseli bluestones. <i>Heritage in Wales</i> 39, 15-9.					Y	Y	
Darvill, T., Davies, R. V., Evans, D. M., Ixer, R. A. and Wainwright, G. 2006. Strumble-Preseli ancient communities and environment study (SPACES): fifth report 2006. <i>Archaeology in Wales</i> 46, 100-7.				Y	Y		

## Neolithic and earlier Bronze Age

	Transitions	Agriculture	Settlement	Landscape	Monuments	Industry	Artefacts
Darvill, T., Evans, D. M. and Wainwright, G. 2004. Strumble-Preseli ancient communities and environment study (SPACES): third report 2004. <i>Archaeology in Wales</i> 44, 104-9.				Y	Y		
Darvill, T., Evans, D. M., Fyfe, R. M. and Wainwright, G. 2005. Strumble-Preseli ancient communities and environment study (SPACES): fourth report 2005. <i>Archaeology in Wales</i> 45, 17-23.				Y	Y		
Darvill, T., Wainwright, G. and Driver, T. 2006. Among tombs and stone circles on Banc Du. <i>British Archaeology</i> 92, 26-9.					Y		
Darvill, T., Wainwright, G., Armstrong, K. and Ixer, R. A. 2008. Strumble-Preseli ancient communities and environment study (SPACES): sixth report 2007-08. <i>Archaeology in Wales</i> 48, 47-55.					Y	Y	
David, G. C. 2004. Great Orme, Bronze Age Mine, Llandudno (SH 771 831). <i>Archaeology in Wales</i> 44, 144-5.						Y	
David, G. C. 2005. Great Orme, Bronze Age mine, Llandudno (SH 771 831). <i>Archaeology in Wales</i> 45, 144-6.						Y	
Davidson, A. 2004. Ffynnon Gorlas (SH 2338 8243). <i>Archaeology in Wales</i> 44, 133-4.			Y				
Davidson, A. and Roberts, J. 2004. Ty Mawr, Holyhead, Site 38 (SH 2532 8077). <i>Archaeology in Wales</i> 44, 149.			Y				
Driver, T. 2004. Gwasaney Hall, Halkyn. Complex of monuments (SJ 2237 6622) NPRN 401048. <i>Archaeology in Wales</i> 44, 111.					Y		
Driver, T. 2004. Tyddyn Llewelyn, Llannor. Complex of monuments (SH 3502 3431) NPRN 400918. <i>Archaeology in Wales</i> 44, 112.					Y		
Driver, T. 2005. Penarth Fawr, Llanystumdwy ring ditch (SH 4200 3705) NPRN 403379. <i>Archaeology in Wales</i> 45, 114.					Y		
Driver, T. 2005. Stone near Ty'n Llwyn, Pentir. <i>Archaeology in Wales</i> 45, 113.							
Driver, T. 2006. Capel Barrow cemetery. St Donat's. Barrow cemetery. SS 9376 6894. NPRN 404662.					Y		

## Neolithic and earlier Bronze Age

	Transitions	Agriculture	Settlement	Landscape	Monuments	Industry	Artefacts
<i>Archaeology in Wales</i> 46, 151.							
Driver, T. 2006. Dollwen barrow, Melindwr. Barrow. SN 6872 8146. NPRN 404648. <i>Archaeology in Wales</i> 46, 144.					Y		
Driver, T. 2006. Flemingston, St Athan. Causewayed enclosure. ST 0145 7058. NPRN 404651. <i>Archaeology in Wales</i> 46, 151-2.			Y				
Driver, T. 2006. Haines Mill, New Radnor. Barrow cemetery. SO 2034 6029. NPRN 405323. <i>Archaeology in Wales</i> 46, 150.					Y		
Driver, T. 2006. Llangurig. Llangurig. Ring-ditch. SN 9052 7996. NPRN 405328. <i>Archaeology in Wales</i> 46, 151.					Y		
Driver, T. 2006. Pentrehwnt enclosure, Ewenny. Defended enclosure. SS 9301 7555. NPRN 404528. <i>Archaeology in Wales</i> 46, 151.			Y				
Driver, T. 2006. Pentrehwnt ring ditch, Ewenny. Ring-ditch. SS 9304 7555. NPRN 404529. <i>Archaeology in Wales</i> 46, 151.					Y		
Driver, T. 2006. Pyllau Isaf, Trawsgoed. Ring ditch. SN 6419 7625. NPRN 405378. <i>Archaeology in Wales</i> 46, 146.					Y		
Driver, T. 2006. Ty Lettice, Nantmel. Barrow cemetery. SN 9958 6891. NPRN 405327. <i>Archaeology in Wales</i> 46, 151.					Y		
Driver, T. 2006. Tynbedw, Trawsgoed. Ring ditch. SN 6419 7625. NPRN 405379. <i>Archaeology in Wales</i> 46, 146.					Y		
Driver, T. 2006. Witland Barrow. Merthyr Mawr. Long barrow? SS 8650 7967. NPRN 404530. <i>Archaeology in Wales</i> 46, 151.					Y		
Driver, T. 2006. Womaston, Old Radnor, causewayed enclosure. SO 2623 6095. NPRN 404649. <i>Archaeology in Wales</i> 46, 150.			Y				
Driver, T. 2008. Bryn Celli Ddu, Llanddaniel Fab, Ring ditch. SH 5076 7013. NPRN 408570. <i>Archaeology in Wales</i> 48, 92.					Y		
Driver, T. 2008. Sacred monuments in a changing landscape: plough-levelled Neolithic and Bronze Age				Y	Y		

## Neolithic and earlier Bronze Age

	Transitions	Agriculture	Settlement	Landscape	Monuments	Industry	Artefacts
complexes along the north Ceredigion coastal valleys. In P. Rainbird (ed), <i>Monuments in the landscape:</i> , 54-65.Stroud: Tempus.							
Driver, T. 2009. Barrows, cropmarks and Lewis Morris: An Early Bronze Age ritual complex discovered at Dollwen, Goginan, <i>Ceredigion, Ceredigion Volume XVI, Number 1. 1-21</i>					Y		
Dunning, R. 2008. Cowbridge, New Breach Farm (SS 9750 7328). <i>Archaeology in Wales</i> 48, 122-3.					Y		
Edmonds, M., Johnston, R., La Trobe-Bateman, E., Roberts, J. G. and Warren, G. 2004. Bardsey Island (SH117224). <i>Archaeology in Wales</i> 44, 146-7.			Y				Y
Evans, E. 2006. Prehistoric funerary and ritual monuments in Glamorgan. <i>Archaeology in Wales</i> 46, 21-41.				Y	Y		
Evans, E. 2006. Prehistoric funerary and ritual monuments in south-east Wales. <i>Archaeology in Wales</i> 46, 170-1.				Y	Y		
Evans, E. and Sherman, A. 2004. Garn Goch Industrial Estate, Penller'gaer (SS 6056 9808). <i>Archaeology in Wales</i> 44, 153.					Y		
Fairburn, N. 2008. The biggest dig in Welsh History. <i>Current Archaeology</i> 216, 30-9.			Y	Y	Y		
Fenn, P., Nash, G. and Waite, L. 2007. Cist Cerrig: a reassessment of a ritual landscape. <i>Proceedings of the Clifton Antiquarian Club</i> 8, 135-7.				Y	Y		
Fleming, A. 2005. Megaliths and post-modernism: the case of Wales. <i>Antiquity</i> 79, 921-32.				Y	Y		
Frayne, R. 2007. A cairn circle on Kilvey Hill. <i>Gower</i> 58, 56-8.					Y		
Frost, P. and Grant, F. 2005. New Radnor, Bestbrook Farm, (SO 2429 6156). <i>Archaeology in Wales</i> 45, 151-2.			Y				Y
Gibson, A. 2006. Excavations at a Neolithic enclosure at Lower Luggy, near Welshpool, Powys, Wales. <i>Proceedings of the Prehistoric Society</i> 72, 163-91.			Y		Y		
Gibson, A. 2008. Were henges ghost-traps? <i>Current Archaeology</i> 214, 34-9.					Y		
Gibson, A. and Jones, N. 2006. Excavation and					Y		

## Neolithic and earlier Bronze Age

	Transitions	Agriculture	Settlement	Landscape	Monuments	Industry	Artefacts
survey at Dyffryn Lane henge complex, Powys. <i>Archaeology in Wales</i> 46, 108-10.							
Grant, F. 2006. Llanymynech, Carreghofa Lane, (SJ 2638 2077). <i>Archaeology in Wales</i> 46, 185-6.					Y		
Grant, F. 2008. Human impact and landscape change at Moel Llys y Coed in the Clwydian Hills, north Wales: the Mesolithic - present day. <i>Archaeology in Wales</i> 48, 3-15.	Y	Y		Y			
Grant, I. 2004. Betws yn Rhos (SH 9066 7349). <i>Archaeology in Wales</i> 44, 143-4.			Y				
Grant, I. 2007. Buttington Cross, Welshpool (SJ 240 090). <i>Archaeology in Wales</i> 47, 133.					Y		
Grant, I. 2007. Excavations in Betws yn Rhos, Conwy, 2004 and 2007. <i>Archaeology in Wales</i> 47, 18-26.			Y				
Grant, I. 2008. Borrass Quarry, Wrexham (SJ 3563 5367). <i>Archaeology in Wales</i> 48, 123.			Y				
Grant, I. 2008. Penycloddiau Cairn, Clwydian Hills (SJ 12713 67886). <i>Archaeology in Wales</i> 48, 114.					Y		
Groom, P. 2007. Badgers, burials and bombs: excavations at Brownslade Barrow, Castlemartin. <i>Sanctuary</i> 36, 35-7.					Y		
Groom, P. and Wilson, H. 2004. Pwllauduon Farm, Tregaron (SN 6555 6295). <i>Archaeology in Wales</i> 44, 143.			Y				
Halstead, J. 2007. Four Crosses, Domgay Lane (SJ 2770 1897). <i>Archaeology in Wales</i> 47, 133-4.					Y		
Halstead, J., Charles, M. and Colls, K. 2007. Llanymynech, Carreghofa Lane (SJ 2638 2077). <i>Archaeology in Wales</i> 47, 134-5.					Y		
Havard, T. 2005. Four Crosses, Domgay Lane (SJ 2707 1878). <i>Archaeology in Wales</i> 45, 139-41.			Y		Y		
Higginbottom, G., Thomas, C. and Sherman, A. 2007. South-east Wales burnt mounds survey. <i>Archaeology in Wales</i> 47, 116.			Y		Y		
Howell, J. K. and Lawler, M. 2004. Swansea Airport (SS 5688 9144). <i>Archaeology in Wales</i> 44, 153.					Y		
Hughes, G. 2004. Fan Foel round barrow, Mynydd Du: interim excavation report. <i>Carmarthenshire</i>					Y		

## Neolithic and earlier Bronze Age

	Transitions	Agriculture	Settlement	Landscape	Monuments	Industry	Artefacts
<i>Antiquary</i> 40, 147-51.							
Hughes, G. 2004. Fan Foel, Llanddeusant (SN 8215 2234). <i>Archaeology in Wales</i> 44, 136-7.					Y		
Hughes, G. and Groom, P. 2007. Barrows, bones and badgers. <i>British Archaeology</i> 96, 42-7.					Y		
John, B. 2008. <i>Bluestone enigma: Stonehenge, Preseli and the Ice Age</i> . Newport: Greencroft Books.					Y	Y	
Johnston, R. and Roberts, J. G. 2004. Dyffryn Ardudwy, Mynydd Egryn (SH 615 203). <i>Archaeology in Wales</i> 44:147.			Y	Y			
Jones, D. T. and Williams, L. J. W. 2004. Garreg Fawr, Llanfairfechan (SH 692 731). <i>Archaeology in Wales</i> 44, 145-6.						Y	Y
Jones, N. 2004. Prehistoric funerary and ritual monuments in Brecknockshire. <i>Archaeology in Wales</i> 44, 115.				Y	Y		
Jones, N. 2004. Prehistoric funerary and ritual monuments in Radnorshire. <i>Transactions of the Radnorshire Society</i> 74, 151-68.				Y	Y		
Jones, N. 2005. Prehistoric funerary and ritual monuments in Brecknock. <i>Archaeology in Wales</i> 45, 115.				Y	Y		
Jones, N. 2007. Crugiau Bach and Llorfa stone circles, Brecknock. <i>Archaeologia Cambrensis</i> 156, 25-32.					Y		
Jones, N. 2007. Cwm Mawr axe factory, Hyssington (SO 3067 9500). <i>Archaeology in Wales</i> 47, 133.						Y	
Jones, N. 2007. Meusydd henge and timber circles, Llanrhaeadr ym Mochnant (SJ 1343 2520). <i>Archaeology in Wales</i> 47, 135-6.					Y		
Jones, N. 2007. Prehistoric funerary and ritual monuments in Breconshire. <i>Brycheiniog</i> 39, 23-46.			Y		Y		
Jones, N. 2007. Prehistoric funerary and ritual monuments survey: Crugiau Bach stone circle and Gro Hill cairns, Elan Valley (SN 93156240 and SN 925601). <i>Archaeology in Wales</i> 47, 107.					Y		
Jones, N. 2008. Llorfa stone circle, Ystradgynlais (SN 78614 15005). <i>Archaeology in Wales</i> 48, 120.					Y		
Jones, N. 2008. Meusydd henge and timber circles,					Y		

## Neolithic and earlier Bronze Age

	Transitions	Agriculture	Settlement	Landscape	Monuments	Industry	Artefacts
Llanrhaeadr-ym-Mochnant (SJ 1343 2520). <i>Archaeology in Wales</i> 48, 120-1.							
Jones, N. 2008. Potential cursus monuments in mid and north-east Wales. <i>Archaeology in Wales</i> 48, 94-6.					Y		
Jones, N. 2008. Womaston causewayed enclosure, Walton (SO 2622 6094). <i>Archaeology in Wales</i> 48, 121-2.					Y		
Jones, N. and Burrow, S. 2008. Hyssington axe factory (SO 3067 9500). <i>Archaeology in Wales</i> 48, 120.						Y	
Kenney, J. 2005. Excavations at Parc Bryn Cegin, Llandygai, near Bangor, Gwynedd. <i>Archaeology in Wales</i> 45, 3-10.			Y	Y	Y	Y	
Kenney, J. 2008. Recent excavations at Parc Bryn Cegin, Llandygai, near Bangor, North Wales. <i>Archaeologia Cambrensis</i> 157, 9-142.			Y	Y	Y	Y	
Kenney, J. 2007. Parc Cybi, Holyhead: a large multi-phase sites in Anglesey. <i>Archaeology in Wales</i> 47, 71-8.			Y		Y		
Kenney, J. and Davidson, A. 2006. Neolithic houses - and more besides - at Llandygai. <i>Current Archaeology</i> 203, 592-7.			Y	Y			
Laws, K. 2004. Coed Aber Artro, Llanbedr (SH 597 268). <i>Archaeology in Wales</i> 44, 147.					Y		
Laws, K. and Brooks, I. 2007. Wentwood (ST 4169 9455). <i>Archaeology in Wales</i> 47, 118-9.					Y		
Lewis, R. 2005. Cleppa Park (ST 2798 8513). <i>Archaeology in Wales</i> 45, 151.					Y		
Lewis, R. 2005. Rumney Great Wharf (ST 2277 7765 to ST 2560 7888). <i>Archaeology in Wales</i> 45, 144.			Y				
Lewis, R. 2007. Monkash, Church Farm barrow cemetery (SS 922 707). <i>Archaeology in Wales</i> 47, 136-7.					Y		
Lewis, R. 2007. Norton, Ogmere-by-Sea (SS 8746 7578). <i>Archaeology in Wales</i> 47, 137.					Y		
Lodwick, M. 2004. Finds recorded by the Portable Antiquities Scheme 2004. <i>Archaeology in Wales</i> 44, 125-30.							Y

## Neolithic and earlier Bronze Age

	Transitions	Agriculture	Settlement	Landscape	Monuments	Industry	Artefacts
Lodwick, M. 2005. Finds recorded by the Portable Antiquities Scheme 2005. <i>Archaeology in Wales</i> 45, 129-35.							Y
Lodwick, M. 2006. Finds recorded by the Portable Antiquities Scheme 2006. <i>Archaeology in Wales</i> 46, 173-9.							Y
Lodwick, M. 2007. Finds recorded by the Portable Antiquities Scheme 2007. <i>Archaeology in Wales</i> 47, 120-7.							Y
Lodwick, M. 2008. Finds recorded by the Portable Antiquities Scheme 2008. <i>Archaeology in Wales</i> 48, 99-105.							Y
Lynch, F. 2004. Bryn Groes Field, Llanddyfnan (SH 499 783). <i>Archaeology in Wales</i> 44, 148-9.			Y				Y
Makepeace, G. 2006. Cefn Cadlan - Cadair Fawr, Hirwaun (SN 97902 11894). <i>Archaeology in Wales</i> 46, 184.							Y
Makepeace, G. 2006. Twyn y Glog (Mynydd y Glog), Penderyn, (SN 96024 08805). <i>Archaeology in Wales</i> 46, 186.					Y		
Makepeace, G. 2007. Archaeological surveys in the Cwm Cadlan area, Penderyn, Powys. <i>Archaeology in Wales</i> 47, 27-35.				Y	Y		
Makepeace, G. A. 2004. Cwm Gu, Llanfihangel Cwm Du (centred on SO 2055 2230). <i>Archaeology in Wales</i> 44, 152.			Y				
Makepeace, G. A. 2004. Galngwryney, Hall Farm (SO 24302 17582). <i>Archaeology in Wales</i> 44, 153.							Y
McFarlane, I. 2008. Shirenewton (ST 480 936). <i>Archaeology in Wales</i> 48, 118-9.			Y				Y
McFarlane, I. and Phillips, F. M. 2008. The Neolithic chambered tomb at Gaerllwyd, Newchurch West. <i>Monmouthshire Antiquary</i> 24, 3-29.					Y		
Mein, A. G. 2004. Trostrey Castle, Trostrey (SO 3595 0435). <i>Archaeology in Wales</i> 44, 150-1.			Y				
Mein, A. G. 2005. Trostrey Castle, Trostrey (SO 3595 0435). <i>Archaeology in Wales</i> 45, 150-1.			Y				
Merrony, M. 2008. Welsh megalithic tombs. <i>Minerva</i> 19:3, 27-9.					Y		

## Neolithic and earlier Bronze Age

	Transitions	Agriculture	Settlement	Landscape	Monuments	Industry	Artefacts
Mighall, T. M., Timberlake, S., Foster, I. D. L., Krupp, E. and Singh, S. 2009. Ancient copper and lead pollution records from a raised bog complex in central Wales, UK. <i>Journal of Archaeological Science</i> 36, 1504-15.				Y		Y	
Murphy, K. 2006. Round barrow at Pen y Bont, St Davids, Pembrokeshire: salvage excavation, 1976. <i>Archaeology in Wales</i> 46, 110-4.					Y		
Murphy, K. and Evans, R. T. J. 2006. Excavation of Neolithic pits, three ring-ditches, and a palisaded enclosure at Cwm Meudwy, Llandysul, Ceredigion, 2003. <i>Archaeologia Cambrensis</i> 155, 23-48.		Y	Y		Y		
Nash, G. 2007. A scattering of images: the rock-art of southern Britain. In A. Mazel, G. H. Nash and C. Waddington (eds), <i>Metaphor as art: the prehistoric rock-art of Britain</i> , 175-203. Oxford: Archaeopress.					Y		
Nash, G. 2007. Fire at the end of the tunnel: how megalithic art was viewed. In D. Gheorghiu and G. Nash (eds), <i>The archaeology of fire: understanding fire as material culture</i> , 117-52. Budapest: Archaeolingua.					Y		
Nash, G. 2008. Encoding a Neolithic landscape: the linearity of burial monuments along Strumble Head, south-west Wales. <i>Time and Mind</i> 3, 345-62.				Y	Y		
Nash, G. 2008. The symbolic use of fire: a case for its use in the late Neolithic passage grave tradition in Wales. <i>Time and Mind</i> 1:2, 145-58.					Y		
Nash, G. and Stanford, A. 2007. New megalithic art within the Neolithic passage grave of Barclodiad y Gawes, Anglesey, North Wales. <i>Rock Art Research</i> 24:2, 257-60.					Y		
Nash, G. and Stanford, A. 2009. Encryption and display: Recording new images on the Calderstones in Liverpool. In T. Barnett and K. Sharpe (eds), <i>Carving a future for British Rock Art: New directions for research, management and presentation</i> , 11-24. Oxford: Oxbow Books.					Y		
Nash, G. and Stanford, A. 2009. Newly discovered megalithic art at the Neolithic chambered monument					Y		

## Neolithic and earlier Bronze Age

	Transitions	Agriculture	Settlement	Landscape	Monuments	Industry	Artefacts
of Dyffryn Ardudwy North Wales (NGR SH 5887 2294). <i>Rock Art Research</i> 26: 1, 250-4.							
Nash, G. H. 2006. <i>The Architecture of Death: The Neolithic Chambered Monuments of Wales</i> , Logaston.					Y		
Nash, G., BROOK, C., GEORGE, A., HUDSON, D., McQUEEN, E., PARKER, C., STANFORD, A., SMITH, A., SWANN, J. and WAITE, L. 2007. Cup-and-ring marks on the Neolithic chambered burial monument of Garn Turne, Pembrokeshire, SW Wales. <i>Adoranten</i> , 47-53.					Y		
Nash, G., Brook, C., George, A., Hudson, D., McQueen, E., Parker, C., Stanford, A., Smith, A., Swann, J. and Waite, L. 2005. Notes on newly discovered rock art on and around Neolithic burial chambers in Wales. <i>Archaeology in Wales</i> 45:12-16.					Y		
Nash, G., Elliot, R., George, A., Hopkins, C., McQueen, E., Strutt, A. and Waite, L. 2007. The Eastern Rhossili Down Project: Landscape Assessment and Reappraisal of the Sweyne's Howe North Monument. First Interim Report. <i>Proceedings of the Clifton Antiquarian Club</i> 8, 87-106.				Y	Y		
Nash, G., George, A. and Waite, L. 2007. Cupmarks discovered on the Cae-Dyni chambered monument, Criccieth, Caernarvonshire, North Wales. <i>Adoranten</i> , 34-9.					Y		
Page, N. 2006. Talgarth, Relief Road (SO 1554 3225). <i>Archaeology in Wales</i> 46, 186.					Y		
Pannett, A. and Evans, P. 2005. Dyffryn, Dyffryn Gardens (ST 09519 72774). <i>Archaeology in Wales</i> 45, 152.			Y				
Parker Pearson, M., Chamberlain, A. T., Jay, M., Marshall, P., Pollard, J., Richards, C., Thomas, J., Tilley, C. and Welham, K. 2009. Who was buried at Stonehenge? <i>Antiquity</i> 83, 23-39.					Y		
Peterson, R. 2004. Away from the numbers: diversity and invisibility in late Neolithic Wales. In V. Cummings and C. Fowler (eds), <i>The Neolithic of the Irish Sea: materiality and traditions of practice</i> , 191-201. Oxford: Oxbow Books.			Y		Y		Y

## Neolithic and earlier Bronze Age

	Transitions	Agriculture	Settlement	Landscape	Monuments	Industry	Artefacts
Phillips, N. and McFarlane, I. 2008. Gaerllwyd, Shirenewton (ST 4475 9675). <i>Archaeology in Wales</i> 48, 117-8.					Y		
Poucher, P. 2008. Llandre, Llety Ceiro, Bow Street (SN 6270 8616). <i>Archaeology in Wales</i> 48, 113.					Y		
Redknap, M. 2004. Glyn, Llanbedrgoch (SH 517 809). <i>Archaeology in Wales</i> 44, 149.			Y				
Richards, C. 2004. Labouring with monuments: constructing the dolmen at Carreg Samson, south-west Wales. In V. Cummings and C. Fowler (eds), <i>The Neolithic of the Irish Sea: materiality and traditions of practice</i> , 72-80. Oxford: Oxbow Books.					Y		
Ritchie, M. 2004. Landscape and ritual. <i>Heritage in Wales</i> 28, 8-11.				Y	Y		
Roberts, J. 2005. Coedydd Aber, Abergwyngregyn (centred on SH 666 710). <i>Archaeology in Wales</i> 45, 147-8.					Y		
Roberts, J. G. 2004. Pan-Wales survey of prehistoric funerary and ritual monuments. <i>Archaeology in Wales</i> 44, 113-4.				Y	Y		
Roberts, R. and Sherman, A. 2004. Merthyr Common, Merthyr Tydfil (centred SO 0737 0101). <i>Archaeology in Wales</i> 44, 134.					Y		
Schlee, D. 2006. Church Close, Begelly (SN 11838 07245). <i>Archaeology in Wales</i> 46, 181.			Y				
Schulting, R. J. 2004. An Irish Sea change: some implications for the Mesolithic - Neolithic transition. In V. Cummings and P. Fowler (eds), <i>The Neolithic of the Irish Sea: materiality and traditions of practice</i> , 22-36. Oxford: Oxbow Books.	Y						
Schulting, R. J. 2007. Non-monumental burial in Neolithic Britain: a (largely) cavernous view. In L. Larsson, F. Lüth and T. Terberger (eds), <i>Non-Megalithic Mortuary Practices in the Baltic – New Methods and Research into the Development of Stone Age Society</i> , 581-603. Schwerin: Bericht der Römisch-Germanischen Kommission.					Y		
Sell, S. H. 2004. Pelenna. Ffynnon Oer (SS 845 990).					Y		

## Neolithic and earlier Bronze Age

	Transitions	Agriculture	Settlement	Landscape	Monuments	Industry	Artefacts
<i>Archaeology in Wales</i> 44, 151.							
Sheridan, A. 2004. Neolithic connections along and across the Irish Sea. In V. Cummings and C. Fowler (eds), <i>The Neolithic of the Irish Sea: materiality and traditions of practice</i> , 9-21. Oxford: Oxbow Books.	Y				Y		Y
Sherman, A. 2005. Swansea, Salubrious Place Phase 2 (SS 6579 9289). <i>Archaeology in Wales</i> 45, 152.							Y
Silvester, B. 2005. Mwdwl Eithin, near Cerrigydrudion (centred at SH 989 547). <i>Archaeology in Wales</i> 45, 137.					Y		
Smith, G. 2004. A survey of prehistoric funerary and ritual sites in north and west Gwynedd and west Conwy, 2001 - 3. <i>Transactions of the Caernarvonshire Historical Society</i> 65, 19-40.			Y	Y			
Smith, G. 2004. Porth Neigwl, Llanengan (SH 283262). <i>Archaeology in Wales</i> 44, 147-8.			Y				
Smith, G. 2005. Prehistoric funerary and ritual monuments. <i>Archaeology in Wales</i> 45, 117.				Y	Y		
Smith, G. 2005. The north-west Wales lithic scatters project. <i>Lithics</i> 26, 38-56.			Y				Y
Smith, G. 2007. Brynsiencyn, Trefarthen lithic scatter evaluation (SH 4910 6650). <i>Archaeology in Wales</i> 47, 130.			Y				
Smith, G. 2008. Bryn Gwyn Stones, Llanidan (SH 462 669). <i>Archaeology in Wales</i> 48, 116.					Y		
Smith, G. 2008. Cromlech Farm, Tregel (SH 360 920). <i>Archaeology in Wales</i> 48, 116-7.					Y		
Smith, G. H. 2006. An Early Bronze Age cremation cemetery at Blaen y Cae, Bryncir, Garndolbenmaen, Gwynedd. <i>Archaeology in Wales</i> 46, 11-20.					Y		
Smith, G., Burrow, S. and Chapman, D. 2008. Nant Farm, Porth Neigwl, Lley (SH 290 257). <i>Archaeology in Wales</i> 48, 114-5.			Y		Y		
Smith, G., Caseldine, A. and Roberts, J. G. 2006. Cairns on Waun Llanfair, Llanfairfechan (SH 71 74). <i>Archaeology in Wales</i> 46, 183.					Y		
Smith, G. and Hopewell, D. 2006. Ty Tan Dderwen, Bala (SH 9540 3625). <i>Archaeology in Wales</i> 46, 183-4.			Y				

## Neolithic and earlier Bronze Age

	Transitions	Agriculture	Settlement	Landscape	Monuments	Industry	Artefacts
Smith, G. and Hopewell, D. 2007. Prehistoric funerary and ritual monument survey: assessment of possible henge and stone circles. <i>Archaeology in Wales</i> 47, 106.					Y		
Timberlake, S. 2004. Banc Tynddol, Cwmystwyth (SN 8090 7484). <i>Archaeology in Wales</i> 44, 137-9.					Y		Y
Timberlake, S. 2004. Comet Lode opencast, Copa Hill, Cwmystwyth (SN 8116 7523). <i>Archaeology in Wales</i> 44, 139-41.						Y	
Timberlake, S. 2006. Excavations at early mine workings at Twll y Mwyn (Cwm Darren) and Erglodd, Ceredigion. <i>Archaeology in Wales</i> 46, 79-86.						Y	
Timberlake, S. 2007. The use of experimental archaeology / archaeometallurgy for the understanding and reconstruction of early Bronze Age mining and smelting technologies. In S. La Niece, D. Hook and P. Craddock (eds), <i>Metals and mines: studies in archaeometallurgy</i> , 27-36. London: Archetype Publications.						Y	Y
Timberlake, S. 2009. The origins of metal mining in Britain: the explorations and archaeological excavations of the Early Mines Research Group in central Wales. In D. J. Linton (ed), <i>The lode of history: proceedings of the Welsh Mine Society conference 2007</i> , 3-16. Llanaber: Welsh Mines Society.						Y	
Tuck, M. 2004. Caerwent, Caerwent Training Area, Army training estate (ST 477 914). <i>Archaeology in Wales</i> 44, 149-50.			Y				Y
Tuck, M. 2004. Crick, Farndon (ST 4898 9018). <i>Archaeology in Wales</i> 44, 150.							Y
Tuck, M. 2004. Machen Quarry (ST 2315 8945). <i>Archaeology in Wales</i> 44, 136.					Y		
Tuck, M. 2004. Rumney Great Wharf (ST 239 779 to ST 251 787). <i>Archaeology in Wales</i> 44, 136.			Y				
Tuck, M. 2005. Caerwent, Caerwent Training Area, Phase 2, Army training estate (ST 4904 9168). <i>Archaeology in Wales</i> 45, 148.					Y		
Tuck, M. 2008. Merthyr Tydfil, Ffos-y fran (centred							

## Neolithic and earlier Bronze Age

	Transitions	Agriculture	Settlement	Landscape	Monuments	Industry	Artefacts
on SO 077 058). <i>Archaeology in Wales</i> 48, 117.							
Tuck, M. and Evans, E. 2006. Graig Fawr, Llandremor (SN 61845 06210). <i>Archaeology in Wales</i> 45, 187-9.					Y		
Walker, E. A. 2005. Babel (SJ 1521 7508). <i>Archaeology in Wales</i> 45, 147.					Y		Y
Whittle, A. 2004. Stones that float to the sky: portal dolmens and their landscapes of memory and myth. In V. Cummings and C. Fowler (eds), <i>The Neolithic of the Irish Sea: materiality and traditions of practice</i> , 81-90. Oxford: Oxbow Books.				Y	Y		

## Neolithic and earlier Bronze Age

	Transitions	Agriculture	Settlement	Landscape	Monuments	Industry	Artefacts
Whittle, A. and Cummings, V. (eds) 2007. <i>Going over: the Mesolithic-Neolithic transition in NW Europe</i> . London: British Academy.	Y	Y					
Williams, J. L. 2007. An early Bronze Age metal axe from Trefor, Gwynedd. SH 377467. <i>Transactions of the Caernarvonshire Historical Society</i> 68, 11-2.							Y
Williams, J. L. and Jenkins, D. A. 2004. Petrographic analysis and classification of prehistoric pottery from northern Wales: Neolithic and Bronze Age. <i>Studia Celtica</i> 38, 1-48.							Y
Williams, J. L. and Kenney, J. 2009. Graig Lwyd (Group VII) lithic assemblages from the excavations at Parc Bryn Cegin, Llandygai, Gwynedd, Wales - analysis and interpretation. <i>Internet Archaeology</i> 26.			Y				Y